

*Bulth*

**GULF COAST ASSOCIATION OF GEOLOGICAL SOCIETIES**

**TRANSACTIONS OF THE**

**30th Annual Meeting**



**LAFAYETTE, LOUISIANA**

**OCTOBER 15, 16, 17, 1980**

**Dedication of the 1980  
GCAGS Transactions Volume To  
THE SEVEN FOUNDING FATHERS  
OF THE GCAGS**

On the occasion of the thirtieth anniversary of the Gulf Coast Association of Geological Societies, the Lafayette Convention Committee is honored to dedicate the 1980 Transactions to the seven founding fathers of the G.C.A.G.S.

Phillip R. Allin  
Leslie Bowling (Deceased)  
A. P. Claudet  
W. B. Neal (Deceased)  
Thomas Philpott  
Francis Stein  
D. D. Utterback

The Memo of the first meeting illustrates the vision and perception which these men exercised in organizing the G.C.A.G.S.  
The Memo is printed below in honor of these outstanding individuals.

# SCHLUMBERGER WELL SURVEYING CORPORATION

## *"Electrical Well Logging"*

HOUSTON, TEXAS

PLEASE REPLY TO  
SCHLUMBERGER WELL SURVEYING CORP.  
481 CANAL BUILDING  
NEW ORLEANS, LOUISIANA

May 16, 1950

### MEMORANDUM

Mr. Leslie Bowling  
Whitney Building  
New Orleans, La.

Re: Memo on Discussion that took place on May 12, 1950, Baton Rouge, La. at  
Combined Meeting of the Lake Charles and New Orleans Geological Society.

At the time of the discussion, Mr. Tom Philpott, Mr. Phillip Allin, Mr. Neil of Stanolind in Lake Charles, Mr. Des Utterback, Mr. A. Claudet, and Mr. Francis Stein of Lafayette, were present.

The discussion was in reference to a permanent regional set-up between the Shreveport Geological Society, the Lake Charles Geological Society and the New Orleans Geological Society for the purpose of promoting a regional yearly meeting, which normally takes place somewhere in the South during the Fall of each year.

It was suggested by Mr. Tom Philpott, that the three societies mentioned above get together, agree on the principles of it, and then send invitations to the following societies:

Jackson  
Houston  
Dallas  
Corpus Christi  
San Antonio  
Tallahassee

The permanent regional set-up would, therefore, be constituted of all the southern geological societies and will compose the Association of American Geologists and Geophysicists of the South.

Permanent committees must be started so that the permanent set-up could be instituted. The most important committees should be as follows:

1. Committee on Publications.
2. Hotel Committee
3. Lecture Room Committee
4. Activity Committee
5. Financial Committee
6. Field Trip Committee

Each Society will elect three directors or members of the committees for a period of three years, scattered in such a way that one member is replaced every year in rotation.

The general chairmanship for the regional meeting will be passed from society to society in rotation.

The chairman of the committee may also be rotated as the years go by, that is a point of discussion.

The committee on publications will set an organization thereby which they will be able to print for the date of the regional meeting all the papers that will be presented there, if the authors are satisfied that they want to present it in that form.

It has been recommended that the author of the manuscript should have the right to reserve the publication rights for the A.A.P.G. if he so desires.

The paper will be binded together and will be sold at a nominal fee to all the members attending the regional meeting.

This system will give the authors a chance to publish a small paper, or large paper, very quickly, and give all the attending members of the society a chance to have a copy of the manuscripts as soon as they have been given.

Also memorandum on new fields could be incorporated in this publication, at the wishes of the authors, which editing the A.A.P.G. has discontinued for quite some time.

The Hotel Committee, or the Chairman, may have to be passed from year to year to the society being the oldest. <sup>host.</sup>

The Lecture Room Committee will have the same remarks applied, as well as the Activity Committee, which after all will be best fitted by the society being the host.

The same thing might apply to some extent to the Field Trip Committee.

So there seems to remain only two permanent committees, which will be the Committee on Publications, and the Financial Committee.

Matter of detail of organization might be discussed after a general agreement is accepted on the principle.

In every case during the discussion, the problem arose as to the possibility of injuring the set-up of the A.A.P.G.

But after discussion took place finally a very clear and outstanding point was brought up, that the A.A.P.G. should not in any way be injured and this is not the purpose at all of the regional meeting.

On the contrary, the regional meeting is something that cannot be taken care of properly by the A.A.P.G. and is of interest to the regional geologists.

The papers presented are regional in nature and so therefore are not of general interest. On the contrary, the A.A.P.G. is a national organization, whose problems are national and whose papers have therefore the need to be of national interest.

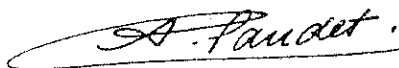
So, on the contrary, the A.A.P.G. with this national problem well in hand, and well taken care of, will be helped by activity from regional groups which will take care of the regional problems and the regional problems only.

This indeed should be made very clear and the author of the paper will decide by himself if the problem is of national and regional nature. If the problems presented at the regional meeting are of a national importance, then the author should be made aware of that fact and the paper should be presented to the A.A.P.G. whenever possible.

We feel that a permanent regional committee of the Southern Geological societies will be of great advantage to all the young geologists, who will not hesitate to prepare papers, even short papers, on small subject, which are not necessarily of national interest but are of greatest interest regionally.

In conclusion the permanent regional yearly meeting and Association of the Southern Geological Societies is entirely regional problems; the A.A.P.G. remains the most important national organization. There is no conflict whatever, and in both cases, they have only one program, and one program only, which is to diffuse the geological information so helpful to all the petroleum geologists involved in the various societies.

These notes are somewhat of a floor-pooling affair, but they represent almost exactly the suggestions made at the time of the meeting. Incidentally, coming to the financial problem, it was more or less agreed that if there is any surplus of profit made by the regional group it will be divided in proportion to the per membership of each society. If there is any deficit, the deficit will also be divided according to the same per membership.

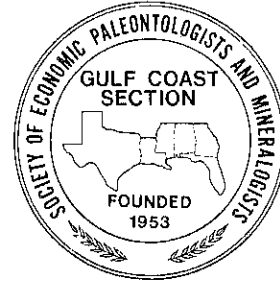
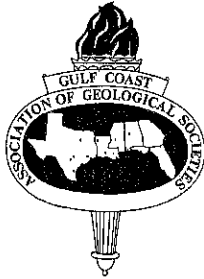


A. Claudet

*Am. Book*

**TRANSACTIONS  
GULF COAST ASSOCIATION OF GEOLOGICAL SOCIETIES**

**A SECTION OF THE AMERICAN ASSOCIATION OF PETROLEUM GEOLOGISTS**



**VOLUME XXX, 1980**

**STEPHEN D. MEYERS**

*Editor*

**WILLIAM VAN WIE**

*Associate Editor*

**PREPARED FOR THE  
Thirtieth Annual Meeting of the  
Gulf Coast Association of Geological Societies  
AAPG REGIONAL MEETING  
AND  
The Twenty-seventh Annual Meeting of the  
GULF COAST SECTION OF THE  
SOCIETY OF ECONOMIC PALEONTOLOGISTS AND  
MINERALOGISTS**

**DON G. BEBOUT**

*SEPM Editor*

**MICHAEL NAULT**

*Associate SEPM Editor*

**OCTOBER 15, 16, 17, 1980**

**Published at  
New Orleans, Louisiana**

*Copyright 1980 by the Gulf Coast Association of Geological Societies  
No reproduction without permission of the President of the GCAGS*

*Cover Photography Courtesy — Ed Broussard, Lafayette*

## TABLE OF CONTENTS

	Page
TITLE PAGE .....	I
DEDICATION TO THE SEVEN FOUNDING FATHERS OF THE GCAGS .....	II
OFFICERS AND EXECUTIVE COMMITTEE, GCAGS .....	IX
OFFICERS OF MEMBER SOCIETIES, GCAGS .....	X
REPORT OF THE PRESIDENT, GCAGS, Frank W. Harrison, Jr. ....	XII
REPORT OF THE GENERAL CHAIRMAN, 1980 MEETING, Marvin A. Munchrath .....	XIII
REPORT OF THE TRANSACTIONS EDITOR, Stephen D. Meyers .....	XIV
ORGANIZATION, THIRTIETH ANNUAL MEETING .....	XV
BEST PAPER AWARDS, GCAGS TWENTY-NINTH ANNUAL MEETING .....	XVII
CONSTITUTION AND BY-LAWS, GCAGS .....	XVIX
PAST OFFICERS AND CONVENTION CHAIRMEN, GCAGS .....	XXII
HONORARY MEMBERSHIP TO GCS-SEPM, William R. Paine .....	XXIII
OFFICERS AND BUSINESS REPRESENTATIVES, GCS-SEPM .....	XXIV
REPORT OF THE PRESIDENT, GCS-SEPM, G. B. Martin .....	XXV
BEST PAPER AWARDS, GCS-SEPM, TWENTY-SIXTH ANNUAL MEETING .....	XXVI
CONSTITUTION AND BY-LAWS, GCS-SEPM .....	XXVII
PAST OFFICERS, GCS-SEPM .....	XXX
PUBLICATIONS OF GCAGS .....	XXXI
PUBLICATIONS OF GCS-SEPM .....	XXXII
ADVERTISERS INDEX .....	513

### TECHNICAL PAPERS AND ABSTRACTS GCAGS

GIANT FIELDS IN THE SOUTHWEST OF MEXICO by José Santiago Acevedo and Octavia Mejia Dautt .....	1
✓ NO. 1 PLAY IN THE U.S.A. SOUTH LOUISIANA TUSCALOOSA TREND 1975-1980 (Abstract) by Joe B. Adams and Frank W. Harrison, Jr. ....	33
✓ REGIONAL PATTERNS OF THE WOODBINE — TUSCALOOSA (NORTHERN COASTAL REGION) by E. G. Anderson .....	35
MORPHOLOGY OF TURBITE — CHANNEL RESERVOIRS, LOWER HACKBERRY (OLIGOCENE), SOUTHEAST TEXAS by Robert R. Berg and Brian K. Powers .....	41
CHESTER AND POTTSVILLE DEPOSITIONAL SYSTEMS, OUTCROP AND SUBSURFACE, IN THE BLACK WARRIOR BASIN OF MISSISSIPPI AND ALABAMA by A. W. Cleaves and M. C. Broussard .....	49
ENVIRONMENT OF DEPOSITION OF UPPER WILCOX SANDSTONES, KATY GAS FIELD, WALLER COUNTY, TEXAS by Gilbert J. De Paul .....	61

THE LIVE OAK DELTA COMPLEX: AN UNSTABLE, SHELF/EDGE DELTA IN THE DEEP TREND OF SOUTH TEXAS by Marc B. Edwards .....	71
WELL LOG ANALYSIS CONCEPTS IN CLASTIC AND ARGILLACEOUS US GULF COAST SEDIMENTS By Walter H. Fertl .....	81
EXPLORATION RAMIFICATIONS OF SUBSURFACE FLUID MIGRATIONS IN THE LAKE BORNE — VALENTINE AREA OF SOUTHEASTERN LOUISIANA by Glen M. Gatenby .....	91
LOUISIANA TUSCALOOSA VERSUS SOUTHEAST TEXAS WOODBINE by Frank W. Harrison, Jr. ....	105
THE ROLE OF PRESSURE, TEMPERATURE, SALINITY, LITHOLOGY, AND STRUCTURE IN HYDROCARBON ACCUMULATION IN CONSTANCE BAYOU, DEEP LAKE AND SOUTHEAST LITTLE PECAN LAKE FIELDS, CAMERON PARISH, LOUISIANA by Frank W. Harrison, III .....	113
PALEOENVIRONMENTS AND TRACE FOSSILS OF A LARGE AGGRADING DELTA MARGIN EMBAYMENT: UPPER WOODBINE FORMATION OF NORTHEAST TEXAS by David K. Hobday and Bob F. Perkins .....	131
JURASSIC GEOLOGY AND HYDROCARBON POTENTIAL OF SOUTHWESTERN ALABAMA (Abstract) by Raymond P. Karpovich and S. J. Mazzullo .....	143
SHOULD WE PERMIT MISSISSIPPI-ATCHAFALAYA DIVERSION? by Charles R. Kolb .....	145
REGIONAL STRATIGRAPHY OF UPPER JURASSIC SMACKOVER CARBONATES OF SOUTHWEST ALABAMA by Ernest A. Mancini and D. Joe Benson .....	151
GEOLOGY OF THE GUM ISLAND AND FRENCH ISLAND AREAS, JEFFERSON COUNTY, TEXAS by Robert C. Mason .....	167
DEPOSITIONAL SYSTEMS IN THE NACATOCH SAND (UPPER CRETACEOUS) EAST TEXAS BASIN AND SOUTHWEST ARKANSAS (abstract) by Mary K. McGowen, O. K. Agagu, and Cynthia M. Lopez .....	173
FUTURE PETROLEUM PROVINCES OF THE GULF OF MEXICO REGION (abstract) by A. A. Meyerhoff .....	175
A PETROGRAPHIC, STRATIGRAPHIC, AND STRUCTURAL STUDY OF THE SMACKOVER GRAY SAND (JURASSIC) IN NORTH LOUISIANA by Samuel A. Miciotto .....	177
GEOLOGIC RESPONSE TO HURRICANE IMPACT ON LOW-PROFILE GULF COAST BARRIERS by Dag Nummedal, Shea Penland, Robert Gerdes, William Schramm, Jacob Kahn and Harry Roberts .....	183
KURTEN FIELD: FIND ANOTHER BY STRATIGRAPHIC PROSPECTING by Robert Pavlovic .....	197
CHEMICAL AND ISOTOPIC EVIDENCE OF THE ORIGINS OF NATURAL GASES IN OFFSHORE GULF OF MEXICO by Dudley D. Rice .....	203
WHAT'S GOING ON IN THE HOUSTON TREND IN MISSISSIPPI by Donald R. Scherer .....	215
AN OCCURRENCE OF HIGH GRAVITY OIL IN AN OLIGOCENE VICKSBURG AGE SANDSTONE IN JIM HOGG COUNTY, TEXAS by L. W. Smith and Neal Hilton .....	223
LOG EVALUATION OF WELLS IN THE TUSCALOOSA TREND OF SOUTH LOUISIANA (abstract) by John Stevenson .....	229
SEISMIC-STRATIGRAPHIC MAPPING OF GULF COAST STRATIGRAPHIC TRAPS (abstract) by John A. Ward .....	231
PACHUTA CREEK (SMACKOVER) FIELD, MISSISSIPPI by Anthony J. Weber .....	233
BLOCK 25 FIELD, CHANDELEUR SOUND, ST. BERNARD PARISH, LOUISIANA by David Woltz .....	243
REGIONAL TECTONIC FEATURES OF THE INNER GULF COAST BASIN AND THE MISSISSIPPI EMPAYMENT IMPLICATIONS FOR POTENTIAL LOW-TEMPERATURE GEOTHERMAL RESOURCES by C. M. Woodruff, Jr. ....	251

**TECHNICAL PAPERS AND ABSTRACTS  
GULF COAST SECTION OF SEPM**

ENVIRONMENTS OF DEPOSITION AND DIAGENESIS OF THE STUART CITY FORMATION (CRETACEOUS), SPEARY GAS FIELD, KARNES COUNTY, TEXAS (abstract) by Wayne M. Ahr and Suzanne Ward .....	257
---	-----



PRELIMINARY OBSERVATIONS OF MODERN POINT BAR FACIES AMITE RIVER LOUISIANA by Whitney J. Autin and Chris M. Fontana .....	259
CALPIONELLIDS AND NANNOCONIDS OF THE TARAISES FORMATION (EARLY CRETACEOUS) IN SANTA ROSA CANYON, SIERRA DE SANTA ROSA, NUEVO LEON, MEXICO by W. H. Blausler and C. L. Mc Nulty .....	263
A PRELIMINARY REPORT ON THE MICRO-PLANKTON AND MICROBENTHON RESPONSES TO THE 1979 GULF OF MEXICO OIL SPILLS (IXTOC 1 AND BURMAH AGATE) WITH COMMENTS ON AVENUES OF OIL TO THE SEDIMENTS AND THE FATE OF OIL IN THE COLUMN AND ON THE BOTTOM by Richard Casey, Anthony Amos, John Anderson, Robert Koehler, Rudy Schwarzer and Jon Sloan .....	273
DEPOSITIONAL SYSTEMS AND LIGNITE PROSPECTING MODELS: WILCOX GROUP AND MERIDAN SANDSTONE OF NORTHERN MISSISSIPPI by Arthur W. Cleaves .....	283
SUBSURFACE WILCOX LIGNITE IN WEST-CENTRAL LOUISIANA by E. J. Coates, C. G. Groat and George F. Hart .....	309
CAPROCK FORMATION AND DIAGENESIS, GYP HILL SALT DOMES, SOUTH TEXAS by Shirley P. Dutton and Charles W. Kreitler .....	333
GEOPRESSURE AND DIAGENETIC MODIFICATIONS OF POROSITY IN THE LIRETTE FIELD AREA, TERREBONNE PARISH, LOUISIANA by Leigh Anne Flournoy and Ray E. Ferrell, Jr. ....	341
CLAY MINERALS AS INDICATORS FOR DEPOSITIONAL ENVIRONMENT IN THE SOUTH HALLETTSVILLE FIELD, LAVACA COUNTY, TEXAS by Robert L. Freed .....	347
THE BIOSTRATIGRAPHIC SIGNIFICANCE OF FOSSIL MOLLUSCAN LARVAE by Thor Hansen .....	351
OSTRACODE BIOSTRATIGRAPHY OF THE LOWER OLIGOCENE (VICKSBURGIAN) OF MISSISSIPPI AND ALABAMA by Joseph E. Hazel, Martin D. Mumma, and William J. Huff .....	361
FORAMINIFERS AND CALCISPHERES FROM THE CUESTA DEL CURA AND LOWER AGUA NUEVA (?) FORMATIONS (CRETACEOUS) IN EAST-CENTRAL MEXICO by R. Geoff Ice and Charles L. Mc Nulty .....	403
THE LOUISIANA CHENIER SYSTEM — SOME PRELIMINARY REINTERPRETATIONS AND REFINEMENTS by Raymond T. Kaczorowski .....	427
EARLY CEMENTATION AND MINERAL STABILITY OF THE CHIPOLA FORMATION, CALHOUN COUNTY, FLORIDA by M. John Kocurko .....	431
MODERN LAGOONAL OSTRACODES AND SPECIES DIVERSITY GRADIENTS, GULF OF MEXICO by Paul R. Krutak .....	437
ENVIRONMENTAL AND DIAGENETIC CONTROLS OF CARBONATE AND EVAPORITE SOURCE ROCKS by M. Malek-Aslani .....	445
SANDSTONE DIAGENESIS AND POROSITY DEVELOPMENT IN OLMOS, SAN MIGUEL, AND UPSON FORMATIONS (UPPER CRETACEOUS), NORTHERN RIO ESCONDIDO BASIN, COAHUILA, MEXICO by Linda C. Merritt .....	459
BAR MORPHOLOGY ALONG THE MISSISSIPPI SOUND MARGIN (abstract) by Dag Nummedal, Rosemary Manty and Shea Penland .....	465
LATE PALEOCENE PLANKTIC FORAMINIFERAL BIOSTRATIGRAPHY OF THE TUSCAHOMA MARLES IN SOUTHWEST ALABAMA by Gary Oliver and Ernest A. Mancini .....	467
MINERALOGY, DIAGENESIS, AND POROSITY IN VICKSBURG SANDSTONES MCALLEN RANCH FIELD, HIDALGO COUNTY, TEXAS by D. L. Richman, K. K. Milliken, R. G. Loucks, and M. M. Dodge .....	473
PALEOENVIRONMENTAL ANALYSIS OF THE JOACHIM DOLOMITE (MIDDLE ORDOVICIAN) NORTH ARKANSAS (abstract) by John S. Rives II .....	483
SEDIMENTS CHARACTERISTICS OF MISSISSIPPI RIVER DELTA-FRONT MUDFLOW DEPOSITS by H. H. Roberts .....	485
THE ATCHAFALAYA DELTA-LOUISIANA'S NEW PROGRADING COAST by Ivor Ll Van Heerden and Harry H. Roberts .....	497
PALEOECOLOGY OF THE MIDWAY GROUP IN NORTHEAST TEXAS by Iradj Youssefnia .....	507

## GULF COAST ASSOCIATION OF GEOLOGICAL SOCIETIES

PRESIDENT .....	Frank W. Harrison, Jr. Independent, Lafayette, Louisiana
VICE PRESIDENT .....	Paul Strunk Independent, Corpus Christi, Texas
SECRETARY .....	Jack W. Shirley Marr Company, Lafayette, Louisiana
TREASURER .....	Robert A. Anderson Independent, Lafayette, Louisiana

### EXECUTIVE COMMITTEE

ALABAMA GEOLOGICAL SOCIETY .....	Ernest Mancini University of Alabama
AUSTIN GEOLOGICAL SOCIETY .....	Charles M. Woodruff, Jr. Bureau of Economic Geology
BATON ROUGE GEOLOGICAL SOCIETY .....	David Pope Louisiana Geological Survey
CORPUS CHRISTI GEOLOGICAL SOCIETY .....	Robert W. Maxwell Harkins and Co.
EAST TEXAS GEOLOGICAL SOCIETY .....	Gerald Merket Atlantic Richfield Co.
HOUSTON GEOLOGICAL SOCIETY .....	Jeffery V. Morris Transcontinental Gas Pipeline Corp.
LAFAYETTE GEOLOGICAL SOCIETY .....	John Schoelen Slapco
MISSISSIPPI GEOLOGICAL SOCIETY .....	Sara Childress Forest Oil Co.
NEW ORLEANS GEOLOGICAL SOCIETY .....	Rudy B. Seigert Westover Oil Co.
SHREVEPORT GEOLOGICAL SOCIETY .....	Robert L. Williamson Williamson & Smitherman
SOUTHEASTERN GEOLOGICAL SOCIETY .....	Felipe A. Pontigo Florida Bureau of Geology
SOUTH TEXAS GEOLOGICAL SOCIETY .....	Wilford Stapp Independent

## OFFICERS AND MEMBER SOCIETIES

### GULF COAST ASSOCIATION OF GEOLOGICAL SOCIETIES

ALABAMA GEOLOGICAL SOCIETY, P.O. Box 6184, University, Alabama 35486

PRESIDENT ..... Ernest Mancini; Department of Geology  
and Geography, University of Alabama

VICE PRESIDENT ..... Ed Schrader; Department of Geology and  
Geography, University of Alabama

SECRETARY ..... Samuel Shannon; Alabama Highway Department

TREASURER ..... Michael Szabo; Alabama Geological Survey

AUSTIN GEOLOGICAL SOCIETY, P.O. Box 1302, Austin, Texas 78767

PRESIDENT ..... Charles M. Woodruff, Jr., Bureau of  
Economic Geology, University of Texas

VICE-PRESIDENT ..... Robert S. Kier; Camp, Dresser & McKee

SECRETARY ..... Peggy A. Laird; Texas Department of Water Resources

TREASURER ..... Debra Richmann; Bureau of Economic Geology,  
University of Texas

BATON ROUGE GEOLOGICAL SOCIETY, P. O. BOX 19151, Baton Rouge, LA 70893

PRESIDENT ..... David E. Pope; Louisiana Geological Survey

VICE PRESIDENT ..... Rod E. Emmer; Coastal Environments, Inc.

SECRETARY ..... Lewis G. Nichols; LSU School of Geoscience

TREASURER ..... Judith A. Schiebout; LSU Department of Geology

PAST PRESIDENT ..... Harry L. Roland, Jr.; Louisiana Geological Survey

CORPUS CHRISTI GEOLOGICAL SOCIETY, P.O. Box 1068, Corpus Christi, TX 78403

PRESIDENT ..... Robert W. Maxwell; Harkins & Company

1ST VICE PRESIDENT ..... Leroy Manka, Hamilton & Brothers

2ND VICE PRESIDENT ..... David Becker, Independent

SECRETARY ..... Curtis Mayo, Inexco Oil Company

TREASURER ..... Owen Hopkins, Seton Oil Properties

EAST TEXAS GEOLOGICAL SOCIETY, P.O. Box 216, Tyler, Texas 75701

PRESIDENT ..... Georgiana Ashford; Independent

VICE PRESIDENT ..... John Carr; Power Management Company

SECRETARY/TREASURER ..... Paul Goodgame; Independent

PAST PRESIDENT ..... James H. Rippey, Independent

HOUSTON GEOLOGICAL SOCIETY, 806 Main Street, Suite B-1, Houston, TX 77002

PRESIDENT ..... Chester Baird; Dow Chemical USA

1ST VICE PRESIDENT ..... William S. Bishop; Tenneco Oil Company

2ND VICE PRESIDENT ..... Peggy J. Rice, Conoco, Inc.

SECRETARY ..... Matthew W. Daura, Transcontinental Gas Pipeline Corporation

TREASURER ..... Gerald A. Cooley; Phillips Petroleum Co.

LAFAYETTE GEOLOGICAL SOCIETY, P.O. Box 51896, Lafayette, LA 70505

PRESIDENT ..... John Schoelen; South Louisiana Production Company  
1ST VICE PRESIDENT ..... Duane Dungan; Lyons Petroleum, Inc.  
2ND VICE PRESIDENT ..... D. J. Bergeron; Stone Oil Corp.  
SECRETARY ..... Mike Huber; Stone Oil Corp.  
TREASURER ..... Phil Dupler; Grigsby Oil & Gas

MISSISSIPPI GEOLOGICAL SOCIETY, P.O. Box 422, Jackson, Miss. 39205

PRESIDENT ..... Marshall Kern; Independent  
1ST VICE PRESIDENT ..... Steve Oivanki; Guardian Oil Co.  
2ND VICE PRESIDENT ..... Simeon Ann King; Hughes & Hughes  
SECRETARY ..... Phillip Gunter; Coquina Oil Corp.  
TREASURER ..... John Marble; Forest Oil Co.

NEW ORLEANS GEOLOGICAL SOCIETY, P.O. Box 52172, New Orleans, LA 70152

PRESIDENT ..... Daniel E. Hudson; Peltco Oil Co.  
VICE PRESIDENT ..... Duncan Goldthwaite, Chevron  
SECRETARY ..... William W. Craig; University of New Orleans  
TREASURER ..... George Hasseltine; CNG Prod. Co.  
PRESIDENT-ELECT ..... James A. Seglund; Independent

SHREVEPORT GEOLOGICAL SOCIETY, P.O. Box 750, Shreveport, LA 70152

PRESIDENT ..... Robert L. Williamson; Williamson & Smitherman  
1ST VICE PRESIDENT ..... Max G. Hare; Arkla  
2ND VICE PRESIDENT ..... Nolan G. Shaw; Arkla  
SECRETARY ..... Craig Barclay; Caddo-Lyons Explor. Co.  
TREASURER ..... George Herrell; McRae Oil

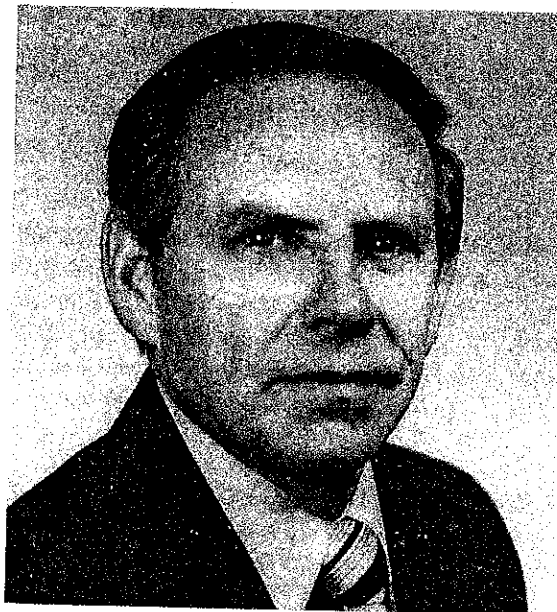
SOUTHEASTERN GEOLOGICAL SOCIETY, P.O. Box 1634, Tallahassee, Florida 32302

PRESIDENT ..... Felipe A. Pontigo, Jr.; Florida Bureau of Geology  
VICE PRESIDENT ..... Sam B. Upchurch; University of South Florida  
SECRETARY/TREASURER ..... Tom Kwader; Northwest Florida Water Mgmt. District  
PAST PRESIDENT ..... T. M. "Mike" Gurr; Dames and Moore

SOUTH TEXAS GEOLOGICAL SOCIETY, B-100, Petroleum Center, San Antonio, TX 78209

PRESIDENT ..... Curtis R. Golson; Gulf Energy & Development Co.  
VICE PRESIDENT ..... Dr. Walter Koppinger; Trinity University  
SECRETARY ..... Michael Pitzer; Hilliard Oil & Gas Co.  
TREASURER ..... Michael Anderson; Balero Corp.

## REPORT OF THE PRESIDENT GULF COAST ASSOCIATION OF GEOLOGICAL SOCIETIES



FRANK W. HARRISON, JR.

This year, 1980, heralds the thirtieth anniversary of the G.C.A.G.S., and the Lafayette Convention will mark the thirtieth successful convention to be staged by the G.C.A.G.S. It is appropriate on this occasion to pause and honor not only the founders of the organization but all of the former officers and convention chairmen, who, through their dedicated service, have molded an outstanding geological organization of Gulf Coast Societies. The G.C.A.G.S., which began in 1950, with less than 1,000 members, now consists of twelve member societies with a combined membership of over 8,000 members, and the annual convention has developed into one of the largest and most popular geological conventions in the country. Last year's convention in San Antonio, which was one of the most successful ever held, set an attendance record of 3,205 total registrants. Congratulations are extended to Ed Roy, the past president, and to George His, the convention chairman, who directed this great event.

Lafayette is pleased to host the G.C.A.G.S. Convention on this memorable occasion of its thirtieth anniversary. Although the attendance will likely be less than in San Antonio, because of hotel facilities, Marvin Munchrath, the Convention Chairman, and his committees have assiduously put together a technical and social program which will be long remembered as the "Great Thirtieth" gathering of the G.C.A.G.S. The general chairmanship of the G.C.A.G.S. is by far the most time-consuming and responsible job within the organization. As you will soon discover, Marvin Munchrath has done a superlative job on this year's convention. I personally thank and congratulate him on behalf of all the members of the G.C.A.G.S. for a responsibility well executed. Let me add my personal welcome to all who will be coming to Lafayette. If I can be of service any time during the convention, please don't hesitate to call on me.

During this thirtieth year of operation, I am pleased to report that the organization is in excellent financial condition showing a bank balance of \$150,000. Bill Tucker and his members of the Finance Committee continue to manage our funds expertly, and I extend to Bill and his committee a vote of thanks from the G.C.A.G.S. I must also express the appreciation of the G.C.A.G.S. to Bob Boyer and his Publication Committee, who are performing exceptionally well. This year the Student Aid Program was expanded and research grants totaling \$7,500.00 were made available to eleven geological students attending universities located in the Gulf Coast area. Scott Lysinger, the retiring G.C.A.G.S. Advisory Council representative, deserves special recognition. Scott has represented the G.C.A.G.S. with distinction for the past three years. M. O. Turner, from San Antonio, has been elected to replace Scott. M. O. brings to the Council his many years of service with the association and will be an excellent communicator between the section and the A.A.P.G. The G.C.A.G.S. welcomes the Baton Rouge Geological Society back into the fold as its newest member. Baton Rouge was one of the original members, but withdrew after several years of inactivity.

In summary, the G.C.A.G.S. on the occasion of its thirtieth birthday is healthy in every aspect. I would like to express my appreciation to all of this year's officers and representatives for assisting in making year number thirty of the G.C.A.G.S. a banner success.

Finally — Happy Birthday, G.C.A.G.S.!

Frank W. Harrison, Jr.  
President  
Gulf Coast Association of Geological Societies

## REPORT OF THE GENERAL CHAIRMAN THIRTIETH ANNUAL MEETING — 1980



MARVIN A. MUNCHRATH

The 30th Annual Meeting of the GCAGS will be the third time Lafayette has had the pleasure of being the host society. As General Chairman for this year's meeting, I would like to welcome you to Lafayette on behalf of the Lafayette Geological Society and the City of Lafayette.

Approximately 18 months ago, when we began for the planning and staging of this meeting, it was decided not to have a theme, leaving the door open for a more varied program. Our program co-chairmen have assembled a forum from the general call for papers and by invitation that we hope will let you leave here better informed and stimulated by our program and our various field trips.

The technical program is complemented by an array of entertainment featuring an ice breaker, dinner dance and various ladies activities including a hospitality room, luncheon, brunch and shopping spree and bus tour of plantation homes in the Washington, Louisiana, area.

Because of substantial increases in printing and rising costs of putting on a convention, we felt the need to increase the registration fee for this meeting. We are, with the help of Dress Atlas, plus monies from advertising and exhibits, going to serve food at the ice breaker, which we hope our guests will enjoy.

If this convention is a success, it is because of the conscientious hard work of the chairmen and members of the various committees who gave their time and talents.

We sincerely hope that this 30th meeting will be an enjoyable experience to all who join us and that we who have planned it have made some contribution to our profession and our industry.

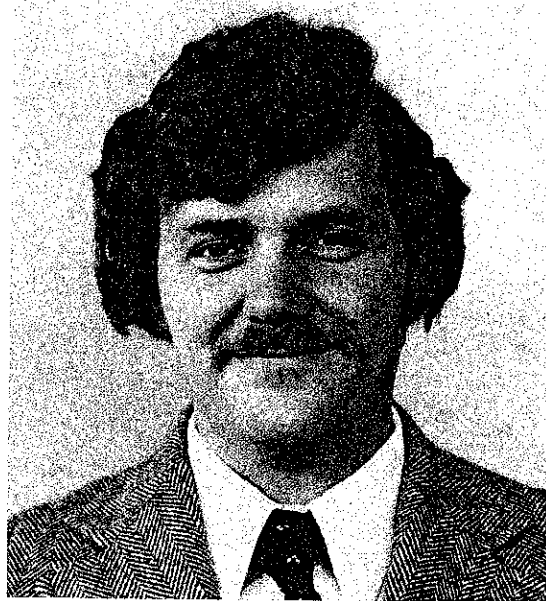
The most rewarding aspect of my job is the cooperation that I received from everyone in staging this convention. My job has been a very pleasant experience and I want to give special recognition to the committee chairmen for their tremendous effort. A list appears on page XV and I hope you will look it over.

I would like to express my deep appreciation to all those members of the Lafayette Geological Society and their wives, who have worked on the various committees. I would like also to thank Mr. George His (last year's general chairman) and Mrs. Roberta Coppinger for their most helpful assistance when we were just beginning. Also, to Mr. Frank Harrison, this year's GCAGS President, for his confidence and support.

The GCAGS represents the largest body of active explorationists in the A.A.P.G., and it is an honor to have been a part of this year's Convention.

Marvin A. Munchrath  
*1980 General Chairman*

## REPORT OF THE *TRANSACTIONS* EDITOR



STEPHEN D. MEYERS

We feel that this *Transactions* volume is, as were its predecessors, a significant contribution to the geological literature of the Gulf Coast. The diversity of topics makes this a well-balanced volume. It is our belief that everyone will find something of interest.

Messrs. Walter Dobie and Roy Naumann deserve particular praise for their active soliciting of manuscripts for the GCAGS technical session. Mr. Steve Murray did an equally commendable job for the GCS-SEPM.

It is obvious that without the contributing authors, there would not be a *Transactions*. The amount of time and patience required to create a paper and ready it for publication is enormous. They deserve sincere thanks for sharing their expertise with us.

Messrs. Bill Van Wie, Don Bebout and Mike Nault spent countless hours editing papers along with taking care of printing the *Transactions*. We are indebted to them for their efforts.

Special thanks are in order for Mr. E. P. Rivas and the staff of Rivas Business Forms. Without their printing skill and cooperative spirit, the *Transactions* would be the poorer.

In the past few years, there have been suggestions of establishing a permanent editorial board for publishing the *Transactions*. It is believed that this would increase the quality and standardize the format (invention of the editorial wheel being a yearly event and a humbling experience). However, I strongly recommend the keeping of the rotational editorship. It allows several individuals a year to experience this rare opportunity. It is this spirit of involvement that makes the GCAGS and the GCS-SEPM what it is today.

Stephen D. Meyers  
1980 *Transactions* Editor

# ORGANIZATION

## THIRTIETH ANNUAL MEETING

*Marvin A. Munchrath – General Chairman; Independent*  
*Harold E. Mathey – Vice Chairman; Independent*

### ADVERTISING COMMITTEE

Raymond Karpovich, Union Texas Petroleum, Chairman  
Tom McFarlain, Lea Exploration, Inc.  
C. J. Bonnacarrere, Goodrich Oil  
Bill Simmons, Dresser Atlas  
J. P. Miller, Chevron, U.S.A.

### ARRANGEMENTS COMMITTEE

I. J. "Drew" Anderson, Independent, Chairman  
Kevin McNamara, Lamson Onshore

### AUDIO-VISUAL COMMITTEE

Dudley Montero, McAlester Fuel, Chairman  
Victor Vaughn, McAlester Fuel

### AWARDS COMMITTEE

Francis Broussard, Aminoil, Chairman  
Charles Tritschler, ARCO Oil & Gas Co.

### CROSS COUNTRY RUN COMMITTEE

Jack Campione, Independent, Chairman  
John Schoelen, South Louisiana Production Company

### EDITORIAL COMMITTEE

Steve Meyers, ARCO Oil & Gas Co., Co-Chairman  
William Van Wie, Tenneco, Co-Chairman  
Ed Melor, ARCO Oil & Gas Co.

### EMPLOYMENT INTERVIEWS COMMITTEE

M. H. Bud Oakes, ARCO Oil & Gas Co., Chairman  
Roland Fisher, Fisher Oil & Gas Inc.  
Marcia Matthieu, ARCO Oil & Gas Co.  
Karen Graber, ARCO Oil & Gas Co.

### ENTERTAINMENT COMMITTEE

E. Lee Mills, Independent, Chairman  
Elmer Havard, Schlumberger Well Serv.  
J. C. Duncan, Independent

### EXHIBITS COMMITTEE

Robert Sutter, Independent, Chairman  
R. J. Granberry, Core Laboratories  
Richard Dunbar, Gearhart Industries  
Al Borland, Independent

### FIELD TRIP COMMITTEE

Peter Gray, Stone Oil Corporation, Chairman  
Frank Vincent, Caddo-Lyons Expl.

Willard P. Leutze, Independent

Chuck Caughey, INEXCO  
Dr. Brian E. Lock, USL  
Dr. Richard Birdseye, USL  
Michael Huber, Stone Oil Corporation  
D. J. Bergeron, Stone Oil Corporation

### GOLF COMMITTEE

Larry Hensarling, Petroleum Futures, Chairman  
Bill Scott, Petro-Log

### HOUSING COMMITTEE

Ben Mayfield, Union Oil Co. of California, Chairman  
Bob Vicars, Union Oil Co. of California

### LADIES ACTIVITIES COMMITTEE

Mrs. Jackie Dupler, Co-Chairman  
Mrs. Julaine Gray, Co-Chairman  
Mrs. Mary Brooks, Registration  
Mrs. Adele Smart, Registration  
Mrs. Barbara Oakes, Hospitality  
Mrs. Verlie House, Hospitality  
Mrs. Kathy Karpovich, Publicity  
Mrs. Patti Eastland, Publicity  
Mrs. Cynthia Bishop, Favors  
Mrs. Terri Dobbs, Favors  
Mrs. Sylvia Bonnacarrere, Luncheon  
Mrs. Sara Fambrough, Luncheon  
Mrs. Mary Lou Swick, Shopping Day & Brunch  
Mrs. Nancy Hagen, Shopping Day & Brunch  
Mrs. Pat Nauman, Hostess Outfits  
Mrs. Jean Smart, Hostess Outfits  
Mrs. Mary Usner, Bus Tour  
Mrs. Pat Duncan, Bus Tour  
Mrs. Betty Myers, Ladies Tennis  
Mrs. Jo Cotton, Ladies Tennis

### PRINTING COMMITTEE

Norman E. Smith, Jones-O'Brien, Inc., Chairman  
D. J. Bergeron, Stone Oil Corporation

### PROGRAM COMMITTEE

Walter Dobie, Independent, Co-Chairman  
Roy Naumann, Independent, Co-Chairman  
Jack P. Martin, Independent

### PUBLICITY COMMITTEE

Gary Roberson, Independent, Chairman  
Everett Lueck, Independent



**REGISTRATION COMMITTEE**

Mike McWilliams, ENTEX, Inc., Chairman  
Don Sobba, Paragon Resources  
Rand Turner, McCormick  
Steve Gosselin, I.M.C.  
Jim Fisher, I.M.C.  
Charles Whipp, Pritchett-Dykes

**SEPM COMMITTEE**

Willard P. Leutze, Meyers-Lasher Inc., Representative  
Virginia Elias, ARCO Oil & Gas Co., Representative  
Steve Murray, ARCO Oil & Gas Co., Program  
Don G. Bebout, Louisiana Geological Survey, Editor

**TENNIS COMMITTEE**

Burt Smart, Independent, Chairman  
Kevin McNamara, Lamson Onshore  
Dixon Millican, Exxon  
William L. Craig, Independent

**TOBIN THEATRE COMMITTEE**

Warren Stoddard, ARCO Oil & Gas Co., Chairman

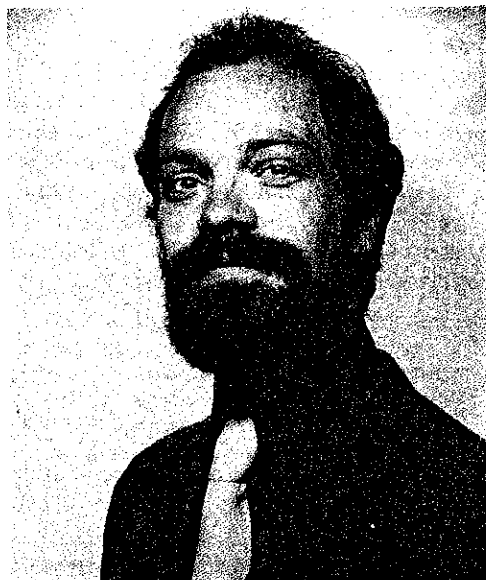
**TRANSPORTATION COMMITTEE**

Jim Montgomery, ENTEX, Inc., Chairman

**GULF COAST ASSOCIATION OF GEOLOGICAL SOCIETIES  
BEST PAPER AWARDS, TWENTY-NINTH ANNUAL MEETING  
SAN ANTONIO, TEXAS**

**FIRST PLACE** was awarded to Charles D. Winker for his paper entitled "Late Pleistocene Fluvial-Deltaic Deposition, Texas Coastal Plain and Shelf".

Charles Winker received his B.S. degree in Geology from the University of Georgia in 1977 and his M.A. degree in Geology from the University of Texas at Austin in 1979. He is currently employed as a Research Scientist Associate at the Bureau of Economic Geology, University of Texas at Austin where his current research includes seismic interpretation of geopressed geothermal prospects, mechanisms of growth faulting, and Pleistocene geomorphology and tectonics of the Atlantic and Gulf Coastal Plains.



Charles D. Winker

The **SECOND PLACE** award and the **A. I. Levorsen Memorial Award** were awarded to Dr. Robert R. Berg for his paper entitled "Characteristics of Lower Wilcox Reservoirs, Valentine and South Hallettsville Fields, Lavaca County, Texas."

Robert R. Berg received his B.A. and Ph.D. degrees in Geology from the University of Minnesota (1948, 1951). His industrial experience totals 16 years. From 1951 to 1956, he was employed as a geologist by the California Company, a subsidiary of the Standard Oil Company of California, and from 1957 until 1966 he was a consulting geologist in the Rocky Mountain area. In 1967 he became Professor and Head of the Department of Geology at Texas A&M University, and in July, 1972, he was named Director of the Office of University Research, Texas A&M University.

Berg's research studies have included petroleum geology, subsurface stratigraphy, and sedimentology. His publications describe the origin of Rocky Mountain structures; seismic and gravity interpretations of the Wind River Range, Wyoming; depositional environment of oil-reservoir sandstones in California, Montana, Wyoming, Mississippi, West Texas and New Mexico, and Texas Gulf Coast; and the role of hydrostatic and hydrodynamic pressures in oil accumulation. He has served as President of the Rocky Mountain Association of Geologists (1966) and as Secretary-Treasurer (1969) and President (1971) of the American Institute of Professional Geologists. He is a Fellow of the Geological Society of America, a member and Certified Petroleum Geologist of the American Association of Petroleum Geologists, and member of the American Institute of Professional Geologists. He has been a Distinguished Lecturer (1972) of the AAPG, has received the Association's A.I. Levorsen Memorial Award, and is currently a lecturer in the Continuing Education Program of the AAPG.



Dr. Robert R. Berg

**THIRD PLACE** was awarded to Carlo C. Christina and Ken G. Martin for their timely presentation entitled "The Lower Tuscaloosa Trend of South Central Louisiana: You Ain't Seen Nothing till You've Seen the Tuscaloosa!"

Carlo C. Christina, a native of New Orleans, is a graduate of Louisiana State University receiving a Bachelor of Science Degree in Geology in 1951. He has been employed by Martin Exploration Company since February 1977, serving as Senior Vice President in charge of Exploration. For the sixteen years prior to that time he was employed by Exchange Oil and Gas Corporation and its predecessors as Senior Vice President in charge of Exploration. He had previously worked as District Geologist for Southern Natural Gas Company in New Orleans for six years before joining Exchange.



Carlo C. Christina

Ken G. Martin, age 43, Chairman of the Board, President and a director of Martin Exploration Company, graduated from Louisiana State University in 1959 (B.S. in Geology) and the University of Texas in 1961 (M.A. in Geology). He was employed as a geologist by Shell Oil Company (1961-1963), Amoco Production Company (Pan American Petroleum) (1963-1967) and Whitestone Petroleum (1967-1968). From 1968 to March 1973 he served as manager of the oil and gas operations of Kenmore Oil Company, Inc. In March 1973 he formed Martin Exploration Company, a family-owned Delaware corporation.



Ken G. Martin

# CONSTITUTION AND BY-LAWS

## GULF COAST ASSOCIATION OF GEOLOGICAL SOCIETIES

### ARTICLE I — Name

This is a non-profit organization and shall be known as the "Gulf Coast Association of Geological Societies." It is hereinafter referred to as "This Association."

### ARTICLE II — Object

The object of This Association is to provide for discussion and publication of papers on subjects and problems coming within the scope of the Geological profession and with particular emphasis on Gulf Coast geology.

### ARTICLE III — Organization

This Association is an organization of AAPG-affiliated Geological Societies in the Gulf Coast Area.

#### SECTION 1.

The business of This Association shall be transacted by an Executive Committee composed of one representative from each member society and the President, Vice President, Secretary, Treasurer, and Past President. The Secretary and Treasurer shall be non-voting members of the Executive Committee. The Vice President, Secretary, and Treasurer shall be elected by the Executive Committee at the annual meeting. The Secretary and Treasurer shall be nominated by the Executive Committee of the local Geological Society next in line to host the annual meeting. The Vice President shall be nominated by the Executive Committee of the host society for the annual meeting two years hence and shall accede to the Presidency. Thus each year the President, Secretary and Treasurer will be from the host society with the Vice President providing continuity with the Executive Committee as he assumes the Presidency in the ensuing year. The duties of these officers shall be those customary to their respective offices.

The GCAGS representative to the Advisory Council of the American Association of Petroleum Geologists shall be selected by the Executive Committee of GCAGS and shall be an ex officio, non-voting member of the GCAGS Executive Committee.

Each member society shall designate a representative to the Executive Committee and in the event the chosen representative cannot attend any given Executive Committee meeting, an alternate representative shall be appointed by the member society to attend and vote in the absence of the representative. The representative, when practicable, shall be an officer or past officer of the society he represents.

Each society shall have one vote on actions taken by the Executive Committee with the exception that the host society, the next annual host society and the immediate past host society will be entitled to two votes by virtue of their members holding the offices of President, Vice President and Past President.

The officers of the Executive Committee shall be elected for a term of one year. They shall be elected and assume their duties as soon after the annual meeting of This Association as is practicable. Any vacancies shall be filled by the Executive Committee as provided above in Paragraph 1.

#### SECTION 2.

The business of This Association shall be conducted by the Executive Committee. A simple majority vote of the members present at meetings is required to effect decisions, except in those matters which require a greater majority, as set forth in the Constitution and By-Laws.

A quorum shall consist of more than one-half of the voting members of the Executive Committee.

### ARTICLE IV — Meetings

There shall be an annual meeting of This Association, the time and place of which shall be determined by the Executive Committee.

### ARTICLE V — Publications

There shall be an annual *Transactions* published by This Association, which shall contain papers presented at the annual meeting, and such other material as selected by the Executive Committee. The Executive Committee is authorized to have published additional bulletins, and other material which they feel will further the object of This Association.

### ARTICLE VI — Funds

The funds of This Association shall be deposited in any national bank or Federally insured Savings and Loan Association selected by the Finance Committee, to the credit of This Association, or invested in U.S. Government Bonds at the discretion of the Finance Committee.

## ARTICLE VII — Amendments

Amendments to this Constitution may be proposed by the Executive Committee, or by any two member societies. Proposed amendments shall be submitted to each of the member societies in writing. It shall require an affirmative vote of three-fourths of the member societies to ratify an amendment to this Constitution.

## ARTICLE VIII — Later Affiliation

Non-member Geological Societies in the Gulf Coast Area which are affiliated with AAPG may petition the Executive Committee for membership and shall be accepted by an affirmative vote of three-fourths of the Executive Committee.

### AMENDMENT I

Any member society may resign from This Association at any time by written notice to the Executive Committee. There shall be no obligation to transfer to such resigning society any portion of This Association's funds.

### AMENDMENT II

This Association shall terminate at such time as a majority of the member societies shall so vote. Upon dissolution all funds and other property shall be divided equally among the member societies.

### BY-LAWS

#### I. COMMITTEES:

The President, with the approval of the Executive Committee, shall appoint the Annual Meeting Chairman, and the following permanent committees:

- A. Publications
- B. Advertising
- C. Publicity

Appointment to these committees shall be for a term of one year.

##### 1. Annual Meeting Chairman

The Annual Meeting Chairman shall direct the staging of the annual meeting, and shall have the authority to appoint such additional committees as he deems necessary.

##### 2. Publications

The Publications Committee shall be responsible for obtaining papers for presentation at the annual meeting, and editing and publishing the annual *Transactions*. It shall endeavor to stimulate geologists in the Gulf Coast to prepare papers which can be collected and published in the *Transactions*, symposium or other form in order to further the object of This Association as set forth in Article II of the Constitution. This committee shall be composed of one member from each of the affiliated societies.

##### 3. Advertising

The Advertising Committee shall be responsible for obtaining advertisements in the publications of This Association, as directed by the Executive Committee. This committee shall be composed of one member from each of the member societies.

##### 4. Publicity

The Publicity Committee shall be responsible for obtaining maximum national and local publicity of the activities of This Association. Also it shall be the responsibility of this committee to stimulate interest and participation in association affairs. The Executive Committee shall function as the Publicity Committee.

The President, with the approval of the Executive Committee, may appoint such additional committees as are necessary to conduct the business of This Association.

#### II. TREASURER:

The Treasurer shall have the authority to issue checks against the Annual Meeting bank account of This Association on his sole signature, but in the event of his absence or incapacity to act, withdrawals or payments by checks may be made on the signature of the President during the continuance of the absence, or incapacity, of the Treasurer. In this event, the identity and authority of the President, and the circumstances relating to the absence or incapacity of the Treasurer shall be certified by the Executive Committee, if so required by the depository. The Treasurer shall submit a financial report on the Annual meeting at each meeting of the Executive Committee and shall keep a set of books in accordance with good accounting practices. He shall submit the books of the Annual Meeting to the Finance Committee by March 1st following the Annual Meeting. The office of Treasurer shall be bonded as directed by the Executive Committee.

### III. FINANCE COMMITTEE:

The Finance Committee shall be responsible for investing and managing the funds of the Association. They shall be responsible for advancing to the Treasurer the necessary funds for operating the Annual Meeting and shall disburse funds for expenses and projects not related to the Annual Meeting as directed by the President upon approval by the Executive Committee. The Committee shall have authority to invest the funds as outlined in article VI. They shall prepare a financial report on the Association's funds and submit it at each meeting of the Executive Committee. They shall also keep an inventory and storage record of publications and equipment owned by the Association. They will keep a set of books in accordance with good accounting practices and will submit the books for auditing as requested by the Executive Committee. The Committee will oversee the preparation and submittal of the Association's Annual Income Tax Return. The Committee will also keep a file of these financial reports, as well as the report of the Treasurer for each Annual Meeting, for access by officers and representatives of the annual meetings of future years. The Committee shall consist of three members serving staggered three-year terms, such that each year one member will complete his term and a new member will be appointed in his place. The President of the Association, with the approval of the Executive Committee, shall appoint the members of the Finance Committee and they shall elect their own Chairman. Members of the Finance Committee shall be bonded as directed by the Executive Committee.

IV. These By-Laws may be amended by an affirmative vote of three-fourths of the Executive Committee.

V. There shall be no dues.

# GULF COAST ASSOCIATION OF GEOLOGICAL SOCIETIES PAST OFFICERS AND CONVENTION CHAIRMEN

	HOST SOCIETY	PRESIDENT	VICE PRESIDENT	SECRETARY	TREASURER	CONVENTION CHAIRMAN
1951	New Orleans	L. Bowling				
1952	Corpus Christi	W.M. Chaddick	W.A. Gorman		E.M. Baysinger	
1953	Shreveport	R.T. Wade	D.D. Utterback	J.S. Spencer	T.D. Barber	W.J. Nugent
1954	Houston	W.R. Canada	W.H. Knight	W.A. Peterson		
1955	Biloxi	A.E. Blanton	L.L. Traupe	F.H. Webster	E.W. Kimball	R.D. Sprague
1956	San Antonio	R.L. Layden	M.W. Beckman	C.W. Holcomb	C.C. Barber	G.J. Joyce
1957	New Orleans	H.N. Hickey	P. Montgomery	R.A. Davis	A.F. Scott	T.H. Philpott
1958	Corpus Christi	E.A. Lohse	R.W. Grayson	E.T. Musselman	K.C. Anderson	R.C. Wilshusch
1959	Houston	G.C. Hardin, Jr.	L. Harvey	J.F. Moss	W.H. Wallace, Jr.	O.G. Bell
1960	Biloxi	M.F. Kirby	D.N. Osburn	W.W. Woolfolk	J.A. Wheller	A.E. Blanton
1961	San Antonio	D. Dassow	E.P. Roth	A.W. Wood	E.G. Jeffreys	L.L. Palmer
1962	New Orleans	T.H. Philpott	J.C. Byrd	H.O. Woodbury	K. Soule	L.H. Meltzer
1963	Shreveport	J.C. Byrd	E. Knott	W.E. Bancroft	R.E. Rogers	H.J. Tyler
1964	Corpus Christi	E. Knott	R.E. Fairchild	R.W. Luker	D.A. Pedrotti	B.F. Dyer
1965	Houston	R.E. Fairchild	A.M. Borland	K.C. Harkins, Jr.	J.L. George, Jr.	E.A. Lohse
1966	Lafayette	A.M. Borland	J.H. Hensley	W.A. Robbins, Jr.	J.S. Schoelen	R.R. Copeland
1967	San Antonio	W.L. Stapp	M.D. Horton	M.L. Frazier, Sr.	L.C. Bryant	M.O. Turner
1968	Jackson	M.D. Horton	R.O. Vernon	L.G. Hughes	E.D. Minihan	L.E. Warren
1969	Miami	R.O. Vernon	H.J. Tyler	J.W. Yon, Jr.	C.W. Hendry, Jr.	H.S. Puri
1970	Shreveport	H.J. Tyler	L.H. Meltzer	C.E. Brown	B.C. Tucker	J.O. Goffe
1971	New Orleans	L.H. Meltzer	D.R. Boyd	M.L. Dwight	P.G. Gray	R.G. Williamson
1972	Corpus Christi	D.R. Boyd	F.M. Schall, Jr.	M.H. Oakes	J.E. Melton	J.M. Sides
1973	Houston	F.M. Schall, Jr.	S.J. Lysinger	M.E. Hole, Jr.	P.W. Cawthon, Jr.	C.E. Harrison
1974	Lafayette	S.J. Lysinger	W.H. Moore	T.J. Eby, Jr.	J.J. Bellamy	F.W. Harrison, Jr.
1975	Jackson	W.H. Moore	C.L. Sartor	W.E. Taylor	H.L. Ladner	C.H. Williams, Jr.
1976	Shreveport	C.L. Sartor	R.E. Boyer	J.T. Palmer	C.E. Brown	L.E. Jordan
1977	Austin	R.E. Boyer	P.G. Gray	A.E. Bell	F.L. Osborne, Jr.	E.G. Wermund, Jr.
1978	New Orleans	R.W. Stephens	E.C. Roy, Jr.	R.M. Swords	C.J. Corona	Jules Braunstein
1979	San Antonio	E.C. Roy, Jr.	F.W. Harrison, Jr.	S.L. Perkins	L.C. Bryant	George His
1980	Lafayette	F.W. Harrison, Jr.	P.M. Strunk	J.W. Shirley	R.A. Anderson	M.A. Munchrath

**HONORARY MEMBER  
GULF COAST SECTION  
SOCIETY OF ECONOMIC PALEONTOLOGISTS AND MINERALOGISTS**



**WILLIAM R. PAINE**

William R. Paine was born in Minneapolis, Minnesota, on January 2, 1923. He received his B.S. degree in Geological Engineering from Montana School of Mines in 1947 after serving in the U.S. Navy in the South Pacific from 1943 to 1946. He was instructor at Kent State University from 1947 to 1948 where he taught geology and physics. Bill went to graduate school at the University of Wyoming in 1948 before going to Monmouth College in Illinois where he taught for two years as an Assistant Professor. In 1949 he returned to Montana School of Mines and earned his M.S. in Geological Engineering.

After working as an Assistant State Geologist for the Montana Bureau of Mines, he came to Louisiana in 1952 for additional graduate study at Louisiana State University and then joined the faculty of The University of Southwestern Louisiana in February 1954. Bill loves geology and has devoted some twenty-five years at U.S.L. to helping others understand and appreciate geology. He gave his holidays, many of his weekends, and parts of his vacations to his students and geology. Bill's activities were prematurely slowed in 1979 when he suffered a severe stroke, although even now he is still helping students whenever possible. He worked with the Boy Scouts and the public schools teaching the elements of his subject. He gave assistance to many oil companies and professional geologists whenever they sought information. He served as a one-man placement agency for the students seeking employment. His only payment for these extra activities was his satisfaction in seeing a student understand geology, a person advance in his career, or a company have a better understanding of a geological problem.

William R. Paine has published many papers which advanced our knowledge of the geology of south Louisiana. He is a member of numerous scientific and professional societies; that he is active in many of these societies can be seen in that he has served as Vice President and President of the Lafayette Geological Society; President of the Lafayette Chapter of the A.I.P.G.; received the second place paper award in 1966 at the G.C.A.G.S.; was elected to Lifetime Honorary Membership in the Lafayette Geological Society in 1969; and had the G.C.A.G.S. Transactions for 1974 dedicated to him. His teaching ability was recognized in 1969 when he received the Halliburton Award for Excellence in Teaching.

W. P. Kessinger, Jr.



# GULF COAST SECTION SOCIETY OF ECONOMIC PALEONTOLOGISTS & MINERALOGISTS

## OFFICERS

*President:* Gene B. Martin, ARCO Oil & Gas Co., P.O. Box 1346, Houston, Texas 77001  
*President-Elect:* Bob F. Perkins, University of Texas at Arlington, Arlington, Texas 76019  
*Vice President:* John L. Carney, Amoco Prod. Co., P.O. Box 50879, New Orleans, La. 70150  
*Secretary:* Mary Ann Rafle, Shell Oil Co., P.O. Box 481, Houston, Texas 77001  
*Treasurer:* Arthur S. Waterman, Paleo Data Inc., 6619 Fleur De Lis Dr., New Orleans, La. 70124  
*Past President:* Willard P. Leutze, P.O. Box 52641, Lafayette, La. 70505  
*Publication Sales Chairman:* Richard P. Zingula, Exxon Co., USA, Houston, Texas 77001.  
*Program Chairman:* Steven M. Murray, ARCO Oil & Gas Co., Lafayette, La. 70501  
*Editor:* Don Bebout, Louisiana Geological Survey, Baton Rouge, La. 70893.  
*Awards Chairman:* Kurt Geitzenauer, ARCO Oil & Gas, Houston, Texas 77001.

## BUSINESS REPRESENTATION

### ALABAMA

Janyth Tolson, Geological Survey of Alabama, P.O. Drawer O, University, Alabama 35486

### LOUISIANA

Scott R. Byrum, Chevron, U.S.A., 1111 Tulane Ave., New Orleans, La. 70112

### MISSISSIPPI

Ernest E. Russell, Dept. of Geology & Geography, Miss. State University, Mississippi 39762

### TEXAS

Austin Area: Mark Presley, Bureau of Economic Geology, Austin, Texas 78712

Houston Area: Nettie Strange, ARCO Oil & Gas, P.O. Box 1346, Houston, Texas 77070

Beaumont Area: William R. Pampe, Geol. Dept., Box 10031, Lamar University, Beaumont, Texas 77710

## FIELD TRIP COMMITTEE

Bob F. Perkins, Chairman, The Univ. of Texas at Arlington, Arlington, Texas  
Emmett R. Adams, Shell Oil Company, New Orleans, Louisiana  
John L. Carney, Amoco Production Company, New Orleans, Louisiana  
Walter W. Coppinger, Trinity University, San Antonio, Texas  
Brian E. Lock, Univ. of Southwestern Louisiana, Lafayette, Louisiana  
Gene B. Martin, ARCO Oil and Gas Company, Houston, Texas  
David Pope, Louisiana Geological Survey, Baton Rouge, Louisiana  
Mary Ann Rafle, Shell Oil Company, Houston, Texas

## FIELD TRIP LEADER

David K. Hobday, Bureau of Economic Geology, The University of Texas at Austin, Austin, Texas

**REPORT OF THE PRESIDENT  
GULF COAST SECTION  
SOCIETY OF ECONOMIC PALEONTOLOGISTS AND MINERALOGISTS  
1980**



**G. B. MARTIN**

I wish to thank the membership of the Gulf Coast Section of SEPM for allowing me the honor and privilege of serving this organization and profession in an administrative capacity during the past year.

On behalf of the executive council I wish to express my appreciation to the GCAGS which has graciously allowed the section the opportunity to participate in and contribute to the overall success of the annual convention. The transactions provide a high caliber of published contributions on the stratigraphy of the Gulf Coast and contain many timely papers to foster new ideas and review old ideas for all geologists.

My sincere appreciation and thanks are extended to the Executive Council, Editor, Program Chairman, Awards Chairman, Nominating Chairman, Audit Committee, Business Representative, Field Trip Committee, and other members who have contributed time, energy, and interest in assuring a successful year for our section. I especially commend Bob Perkins, our president-elect, who graciously consented to take charge of our spring field-trip, formulated a committee, and caused the field-trip to happen. Also, a special thanks to Vice President C. Carney for handling the field-trip registration.

Our section appears to be stable financially and growing with sixty new members reported for the year, with a total membership of 560.

The Executive Committee nominated for honorary membership Bill Payne of Lafayette, La. and we are proud to recognize Bill for his contribution to the stratigraphy of the Gulf Coast.

The section is convening an informal conference in 1980 entitled "Gulf Coast Stratigraphy" and it is hoped much may be learned and new ideas exchanged by geologists from throughout the Gulf Coast region.

Special recognition is extended to Virginia Elias and W. P. Luetze for serving as our representatives to GCAGS Convention Committee.

G. B. Martin  
President GCS-SEPM

**SOCIETY OF ECONOMIC — GULF COAST SECTION  
PALEONTOLOGISTS AND MINERALOGISTS  
BEST PAPER AWARDS, TWENTY-SIXTH ANNUAL MEETING, SAN ANTONIO**

**FIRST PLACE** to Leigh C. Price, Jerry L. Clayton and Linda L. Rumen for their paper entitled "Organic Geochemistry of a 6.9 Kilometer Deep Well, Hinds County, Mississippi". Leigh C. Price received his B.S. (Chemistry, 1966) and Ph.D. (Geology, 1972) degrees from the University of California at Riverside. He joined Esso Production Research Company in 1972 as a research geologist. In 1974, Leigh joined the United States Geological Survey where he is responsible for designing and carrying out geological and geochemical research to test the hypothesis of a hot-deep origin and vertical primary migration of oil. He has authored or co-authored 27 publications on geochemistry. Mr. Price was an AAPG Distinguished Lecturer from 1973 to 1975 and received the Matson award in 1973 and 1975. Jerry L. Clayton received his B.S. (1971) and M.S. (1974) degrees from the University of Missouri at Columbia. He joined the United States Geological Survey in 1974 and is currently working in the Oil and Gas Resources branch. Jerry has authored or co-authored 10 publications on petroleum geochemistry.

**SECOND PLACE** to C. Wylie Poag and R. Christopher Tresslar for their paper entitled "Habit Associations among Living Foraminifers of West Flower Garden Bank, Texas Continental Shelf". C. Wylie Poag is a micropaleontologist specializing in the ecology, paleoecology, and biostratigraphy of benthic and planktic foraminiferids. He was educated at Florida State University (B.S., Geology, 1959), Louisiana State University (M.S., Geology, 1963), and Tulane University (Ph.D., Paleontology, 1971). He joined Chevron Oil Company in 1963 and served as an exploration micropaleontologist in southwest and offshore Louisiana until 1970. For two months in 1970, he was aboard DV Glomar Challenger as a foraminiferal specialist during Leg XI of NSF's Deep Sea Drilling Project. He joined the faculty of the Department of Oceanography at Texas A&M University as an Assistant Professor in the Fall of 1970, where he taught graduate courses in micropaleontology, marine biostratigraphy, and the history of ocean basins. His research stressed the paleoecology and biostratigraphy of foraminifers in shelf sediments and deep-sea cores from the Gulf of Mexico. He spent 1974 on assignment from Texas A&M to the National Science Foundation as Assistant Project Officer for the Deep Sea Drilling Project. He joined the U.S. Geological Survey in the Fall of 1974 as a member of the Paleontology and Stratigraphy Branch assigned to the Atlantic and Gulf of Mexico Branch of the Office of Marine Geology in Woods Hole, Massachusetts. In 1976, he served as foraminiferal specialist and paleontological coordinator during the U.S.G.S.'s Atlantic Margin Coring Project. His research includes analysis of Cenozoic and Mesozoic foraminiferal assemblages from the Atlantic and Gulf of Mexico outer continental shelf. Besides his own foraminiferal studies, he is responsible for coordination of other paleontologic studies of the Atlantic and Gulf of Mexico outer continental shelf. He has published 78 technical papers and abstracts and is a member of the American Association of Petroleum Geologists, American Association for the Advancement of Science, Society of Economic Paleontologists and Mineralogists, Paleontology Society, American Quaternary Association, Paleontological Research Institution, and Sigma Xi. He was President of the Gulf Coast Section of the Society of Economic Paleontologists and Mineralogists during 1972-73.

**THIRD PLACE** to Richard E. Casey, Linda W. Gust, Richard A. Reynolds, Damon H. Williams, Ann Leavesley, Theo Duis, and Joan M. Spaw for their paper entitled "Ecological Niches of Radiolarians, Planktonic Foraminiferans and Pteropods Inferred from Studies on Living Forms in the Gulf of Mexico and Adjacent Waters". Richard Casey received his B.A. in life science at San Diego State in 1960. He then worked at Scripps Oceanography in jobs ranging from marine technician, scientific collector, to assistant curator or cores under W. R. Riedel. This last position developed his interest in radiolarians resulting in a Ph.D. from the University of Southern California on radiolarian ecology. While at U.S.C., as the first Allan Hancock Fellow, he studied under Orville Bandy and they developed a series of joint research projects lasting until Bandy's death in 1977. Casey was a professor of biology and geology at California State University, Northridge before accepting a position at Rice University. Casey is currently our Associate Professor of Geology at Rice, where he teaches courses and directs research in micropaleontology and oceanography. His research and publications deal with radiolarian ecology, paleoecology, and biostratigraphy, planktonic and benthonic foraminiferal ecology; and the distribution and ecology of microplankton in general. His most recent research interest deals with microplanktonics and microbenthonic responses to oil spills.

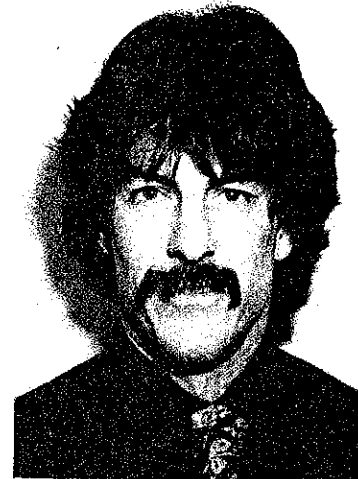
Linda W. Gust received her B.A. (Biology, 1975) from Lawrence University and M.A. (Biology, 1978) degree from Rice University, where her thesis was entitled "Structure of Microplankton Community of the South Texas Continental Shelf". Since 1978, Linda has been a research assistant in the Botany Department at the Australian National University, Canberra.

Richard A. Reynolds received his B.A. degree in Geology (1976) from California State University at Long Beach and his M.A. and Ph.D. from Rice University in 1978 and 1979. He is currently employed with Getty Oil Company at their Exploration and Production Research Center in Houston, Texas. He is the author of numerous publications dealing with Micropaleontology.

Damon H. Williams received a B.A. in Biology (1974) from the University of Texas at Austin and a M.A. (1977) from Rice University. Damon is currently pursuing a M.S. in Environmental Health Engineering.

Deborus Duis is currently on the staff of Texas A&M University where he is involved in all aspects of Oceanography. Mr. Duis designed and developed the successful DUCA hi-speed plankton sampler.

Joan M. Spaw received an A.B. degree in Geology from Bryn Mawr College in 1974 and a M.A. and Ph.D. from Rice University in 1977 and 1979. She is currently a staff geologist at Cities Service Company, U.S. offshore and frontier region.



Leigh C. Price



C. Wylie Poag



Richard E. Casey

# GULF COAST SECTION SOCIETY OF ECONOMIC PALEONTOLOGISTS AND MINERALOGISTS

## Constitution

### ARTICLE I — Name

The Section shall be known as the Gulf Coast Section of the Society of Economic Paleontologists and Mineralogists.

### ARTICLE II — Object

The object of the Section is to promote the science of stratigraphy in the Gulf Coast states through research in paleontology and sedimentary petrology, especially as it relates to petroleum geology. The Section will be closely associated with the Gulf Coast Association of Geological Societies and will cooperate with it, and with the local geological societies of which it is composed, for the furtherance of mutual objectives.

### ARTICLE III — Membership

1. The Section shall be composed of members, associate members, charter members, and honorary members.
2. Members shall be persons engaged in paleontologic, petrographic or stratigraphic studies that have application to the geology of petroleum who are members or associate members of the Society of Economic Paleontologists and Mineralogists and who work or reside in the Gulf Coast province of the states of Texas, Louisiana, Mississippi, Alabama, Georgia, or Florida, or whose interest or work is principally within these states. Membership, once obtained, shall not be dependent upon continued residence in the aforementioned states.
3. Associate members shall be persons engaged in paleontologic, petrographic or stratigraphic studies that have application to the geology of petroleum, who work or reside in the Gulf Coast province of the above mentioned states, and who are not members or associate members of the Society of Economic Paleontologists and Mineralogists. Associates shall enjoy all the privileges of membership, save that they shall not hold office. Election to membership in the Society of Economic Paleontologists and Mineralogists will automatically advance associates to members.
4. Charter members are those whose applications for membership were received before the first nomination of officers. They shall enjoy all the privileges of members, and hereinafter are included in all references to "members."
5. The Council may elect as honorary members persons who have contributed distinguished service to the science of stratigraphy, paleontology or sedimentary petrology, especially as they relate to petroleum geology in the Gulf Coast. Honorary members shall not be required to pay dues.
6. Each candidate for membership shall submit to the secretary an application on a form authorized by the Council for this purpose.
7. New members and associates enrolled after September 15 shall be considered as having paid their dues for the next calendar year.

### ARTICLE IV — Officers

1. Executive authority of the Section is vested in a Council consisting of six members, duly elected officers, as follows: president, president-elect, vice-president, secretary, treasurer, and the most recently retired past president.
2. The president shall discharge the usual duties of a president, as well as act as presiding officer at all meetings of the Section and Council. He shall appoint an editor, program chairman, committee chairman and business representatives.
3. The vice-president shall assume the duties of the president in the case of the absence or disability of the latter. He shall also be chairman of the membership committee and chairman of the employment counseling committee.
4. The secretary shall keep records of the proceedings of the Section and a complete list of the membership. He shall attend to the preparation and mailing of notices, membership application blanks and other materials necessary to the business of the Section.
5. The treasurer shall have custody of all funds of the Section. He shall keep account of the receipts and disbursements, and submit his account to the membership at the end of each year.
6. The Council shall consider all candidates for membership and pass on the qualifications of the applicants; shall have control and management of the affairs and funds of the Section; shall designate the time and place of the Annual Meeting.
7. The president and vice-president shall not serve for more than one year, except that if the vice-president succeeds to the position of acting president, he may be elected to a full term as president.
8. In the event that neither the president nor vice-president is available to serve as presiding officer of the Section, the immediate past president shall assume the president's duties.
9. The president-elect shall serve for (1) year as such, and in the following year he shall assume the office of president. He shall have no administrative authority except as a member of the Council. He shall acquaint himself with all the details of the office of president and generally prepare himself to serve as president. He shall be responsible for the preparation of the annual meeting for the ensuing year.

#### ARTICLE V — Meetings

1. The Section shall hold at least one stated meeting each year, which shall be known as the Annual Meeting. This meeting will usually be held in conjunction with the Annual Meeting of the Gulf Coast Association of Geological Societies.
2. The program for the Annual Meeting shall be arranged by the program chairman, in conjunction with the chairman designated by the Gulf Coast Association of Geological Societies to arrange its own program. In general, it will be desirable that the contributions for members of the Section will be included in the main program, rather than being allotted to a separate session.
3. At the time of the Annual Meeting, a Business Meeting shall be held for the transaction of Section business.

#### ARTICLE VI — Amendments

The constitution may be amended by a two-thirds vote of returned mail ballots received by the secretary sixty days after proposal of amendments with provision for vote is mailed to the members. Any proposed amendments must have the approval of a majority of the Executive Council before being submitted to the members.

### BY-LAWS

#### ARTICLE 1 — Dues

1. The fiscal year of the Section shall commence on October 1 and expire on September 30 of the following year.
2. The annual dues of the members and associates of the Section shall be two dollars. Penalty of 50¢ shall be assessed for late payments of dues. The 50¢ late penalty shall be waived upon payment of dues for two or more years.
3. A bill for dues shall be mailed to each member and associate before January 1 of each year. Members and associates who have not paid their annual dues by April 1 shall be dropped from the membership rolls.
4. Members and associates dropped for non-payment of dues may apply to the Council for reinstatement, and be reinstated by majority vote of the Council.
5. Members or associates may, at their discretion, pay their annual dues in advance for periods of up to five years.

#### ARTICLE II — Financial Procedure

No officer or member shall enter into contract to disburse any of the Section's funds without the co-signature of a member of the Council. Disbursal of a sum in excess of \$50.00 must be approved by a majority of the Council.

#### ARTICLE III — Elections

1. The president shall appoint two nominating committees, instructing each committee to submit nominations for president-elect, vice-president, secretary, and treasurer. These nominations shall be in the secretary's hands before July 15. If desired, the same person may be nominated by the two committees for the offices of secretary and treasurer, but the nominations for president-elect and vice-president shall not include the names of the same person on the two slates. The nominations of the first committee to file its report will have precedence in case of overlapping nominations, and the other committee shall then be requested to change its nomination. A candidate for office must be an active member and reside in the Gulf Coast at the time of his nomination.
2. Ballots containing the nominations for officers, arranged alphabetically under each office, shall be prepared by the secretary and mailed to each member of the Section on or before July 15. The ballots received by the secretary before September 15 shall be counted by him. Receipt of a plurality of the votes cast for any office shall constitute election. In case of a tie vote, members of the Council shall cast one additional deciding vote.
3. Results of balloting shall be announced at the Annual Meeting, and the new officers shall enter upon duty at the adjournment of the Meeting.

#### ARTICLE IV — Publications

1. The Section editor, appointed by the president, shall actively solicit papers from the Section membership for presentation at the Annual Meeting. He shall cooperate with the editor of the Gulf Coast Association of Geological Societies' annual *Transactions* volume in preparing papers delivered at the meeting for publication in this volume. He shall cooperate with the editors of the Society of Economic Paleontologists and Mineralogists' Journals by helping to arrange for publication in these periodicals of suitable papers which come to his attention.
2. Members of the section may purchase one copy of each Section publication at a discount of 20% off the advertised price.

#### ARTICLE V — Business Representatives

The president shall appoint one representative from each group of members in each local geological society affiliated with the Gulf Coast Association of Geological Societies and in other localities as needed. Each representative shall have an up-to-date list of the members residing in his vicinity. He will notify these members concerning any matters of Section policy which may be relayed to him by the president, and shall have the authority to convene a meeting of these members to determine their views concerning Section affairs. He will report the results of such meetings to the president of the Section. He will cooperate with the Section editor in soliciting papers to be presented at the Annual Meeting, and with the chairman of membership committee in recruiting new members for the Section.

#### ARTICLE VI — Amendments

1. The by-laws may be amended by a two-thirds vote of returned mail ballots received by the secretary within sixty days after proposal of amendments with provision for vote is mailed to the members. Any proposed changes must have the prior majority approval of the Executive Council.
2. A petition containing the signatures of twenty active members is considered sufficient to bring before the Council a proposed change in the constitution or by-laws. A majority vote of the Council is also considered sufficient to initiate a proposed change.

#### ARTICLE VII — Audit

The President shall appoint an auditing committee which shall review the accounts presented by the treasurer. The approval of the treasurer's books by this committee shall be required before his final report will be accepted. The treasurer may submit a provisional report at the Annual Meeting, and his final audit shall be accomplished not later than 30 days thereafter.

#### ARTICLE VIII — Vacancies

1. A vacancy occurring in the offices of vice-president, secretary or treasurer shall be filled by Executive Council appointment.
2. A vacancy occurring in the office of president-elect shall be filled by mail ballot by membership, through a special election called by the Executive Council.

This constitution was adopted in 1954.  
It has been amended in 1960, 1962, 1966,  
1969, 1971, 1972 and 1975.

# GULF COAST SECTION — SEPM PAST OFFICERS

	PRESIDENT	VICE-PRESIDENT	SECRETARY	TREASURER
1953-1954	Stuart A. Levinson	Grover E. Murray	William H. Akers	Frank V. Stevensen
1954-1955	Charles W. Stuckey, Jr.	E.H. Rainwater	William H. Akers	Fred L. Smith, Jr.
1955-1956	E.H. Rainwater	Frank S. Westmoreland	Hugh A. Bernard	Eleanor T. Caldwell
1956-1957	Lloyd M. Pyeatt	J.O. Colle	H. Dillingham, Jr.	Eleanor T. Caldwell
1957-1958	J.O. Colle	Fred L. Smith, Jr.	Harold V. Andersen	William G. Parker
1958-1959	Marcus A. Hanna	Claude M. Quigley	Fred E. Smith	Bernard L. Hill, Jr.
1959-1960	David E. Pope	A.D. Ellis, Jr.	Gordon C. Munsey	H.A. Chun
1960-1961	Claude M. Quigley	Harold V. Andersen	E. Ann Butler	Edward Marks
1961-1962	Harold V. Andersen	Theodore D. Cook	Benjamin J. Petrussek	Albert D. Warren
1962-1963	Albert D. Warren	Ernest H. Horton	Blair S. Parrott	Henry H. Phillips
1963-1964	Lynan D. Toulmin	E. Ann Butler	Charles C. Albers	John E. Kilgore
1964-1965	Howard L. Tipsword	Benjamin J. Petrussek	D. Jeter Smith	Emmett R. Adams
1965-1966	John B. Dunlap, Jr.	John J.W. Rogers	M. Ray Bane	Charles B. Morris
1966-1967	Hubert C. Skinner	Richard P. Zingula	Gene Ross Kellough	Gene B. Martin
1967-1968	Benjamin J. Petrussek	Dan McGregor	Garrett Briggs	Herbert A. Elliott, Jr.
1968-1969	William A. Atlee	Edgar B. O'Quinn	James W. Fowler	William E. Steinkraus
1969-1970	Fred L. Smith, Jr.	Kenneth L. Loep	Robert K. Sylvester	C. Wylie Poag, Jr.
1970-1971	Jules Braunstein	Douglas E. Jones	Walter H. Trenchard	Robert N. Davids
1971-1972	William W. Hay	William E. Steinkraus	Karl J. Koenig	Gerald R. Stude
1972-1973	C. Wylie Poag, Jr.	Emmett R. Adams	Gerald R. Stude	Gerald R. Stude
1973-1974	Edward B. Picou, Jr.	Walter H. Trenchard	Lawrence C. Menconi	Joan B. Stough
1974-1975	Emmett R. Adams	Edward Marks	Herbert A. Elliott, Jr.	J. Loyd Tuttle, Jr.
1975-1976	James L. Lamb	Lawrence C. Menconi	William S. Grubb	Doris M. Curtis
1976-1977	Clifton A. Couture	Eleanor T. Caldwell	Sherwood W. Wise, Jr.	John L. Carney
1977-1978	Gerald R. Stude	William P.S. Ventress	Gary R. Roberson	Joseph E. Boudreaux
1978-1979	Willard P. Leutze	Bob F. Perkins	Walter P. Kessinger	George C. Esker, III
1979-1980	Gene B. Martin	Bob F. Perkins	Mary Ann Rafle	Kenneth A. Hodgkinson
				Arthur S. Waterman

# PUBLICATIONS of the GULF COAST ASSOCIATION OF GEOLOGICAL SOCIETIES

Following is a list of available publications of the G.C.A.G.S. They may be ordered from The Department of Geological Sciences, The University of Texas at Austin, P.O. Box 7909, Austin, TX 78712.

## TRANSACTIONS

Volume 1 (1951) New Orleans .....	\$ 9.00
Volume 2 (1952) Corpus Christi .....	\$ 9.00
Volume 3 (1953) Shreveport .....	\$ 9.00
Volume 4 (1954) Houston .....	\$ 9.00
Volume 5 (1955) Biloxi .....	\$ 9.00
Volume 6 (1956) San Antonio .....	\$ 9.00
Volume 7 (1957) New Orleans .....	\$ 9.00
Volume 8 (1958) Corpus Christi .....	\$ 9.00
Volume 9 (1959) Houston .....	\$ 9.00
Volume 10 (1960) Biloxi .....	\$ 9.00
Volume 11 (1961) San Antonio .....	\$ 9.00
Volume 12 (1962) New Orleans .....	\$ 9.00
Volume 13 (1963) Shreveport .....	\$ 9.00
Volume 14 (1964) Corpus Christi .....	\$ 9.00
Volume 15 (1965) Houston .....	\$ 9.00
Volume 16 (1966) Lafayette .....	\$ 9.00
Volume 17 (1967) San Antonio .....	\$11.00
Volume 18 (1968) Jackson .....	\$11.00
Volume 19 (1969) Miami .....	\$12.00
Volume 20 (1970) Shreveport .....	\$12.00
Volume 21 (1971) New Orleans .....	\$13.00
Volume 22 (1972) Corpus Christi .....	\$13.00
Volume 23 (1973) Houston .....	\$13.00
Volume 24 (1974) Lafayette .....	\$15.00
Volume 25 (1975) Jackson .....	\$17.50
Volume 26 (1976) Shreveport .....	\$17.50
Volume 27 (1977) Austin .....	\$18.50
Volume 28 (1978) New Orleans .....	\$25.00
Volume 29 (1979) San Antonio .....	\$22.50
Volume 30 (1980) Lafayette .....	\$30.00
Comprehensive Index (1951-65) .....	\$ 1.50
Bibliography of Gulf Coast Geology (1970)	
Volume 1 & 2 Set .....	\$ 9.50
Bibliography of Gulf Coast Geology (1976)	
Volume 3 (Special Edition for 1969-74) .....	\$ 5.50
Bibliography of Gulf Coast Geology — Vols. 1, 2 & 3 (Combination price) .....	\$12.50
Fault and Salt Map of Louisiana 52" x 106" edited by W.E. Wallace, Jr. (1966) .....	\$15.00 Rolled
Faults of South and Central Texas, Map compiled by Delos R. Tucker (1967) .....	\$ 1.50
Bathymetry of the Gulf of Mexico, Map by Elazar Uchupi (1967) .....	\$ 1.50
Lower Wilcox Depositional System, Texas, Map, pp. 106-107, Vol. 17 (1967) .....	\$ 1.50

Texas Residents Include 5% Sales Tax

All Foreign orders add \$1.00/volume

ALL ORDERS MUST BE PREPAID.



**GULF COAST SECTION**  
**Society of Economic Paleontologists and Mineralogists**  
**PUBLICATIONS ORDER FORM**  
**October 1980**

	No. of Copies	Price	Amount
TYPE LOCALITIES OF THE GULF COAST			
Unit II		0.50	
Unit III		0.50	
FIELD TRIP GUIDEBOOKS			
1961 — Middle Eocene, Houston Co., Texas		1.50	
1963 — Stratigraphic study of Pleistocene to Middle Eocene, Houston, Tx.		1.50	
1979 — Lower Cretaceous strata in Moffatt Mound area near Lake Belton, Bell Co., Tex. — reprint of 1977 book.		3.00	
1980 — Middle Eocene Coastal Plain and Nearshore Deposits of East Texas: A Field Guide to the Queen City Formation, and Related Papers.		5.00	
SPECIAL VOLUME			
1973 — Proceedings of symposium on Calcareous Nannofossils		3.00	
	Subtotal		
	Less 20% for Gulf Coast SEPM members only		
	Subtotal		
	Postage and handling*		*
	Sales tax*		*
	Total		

NAME \_\_\_\_\_

ADDRESS \_\_\_\_\_

CITY \_\_\_\_\_ STATE \_\_\_\_\_ ZIP CODE \_\_\_\_\_

\*Enclose \$1.00 per order for U.S. delivery and \$2.00 for foreign. 5% sales tax for Texas delivery.  
 Make checks or money orders payable to — "Gulf Coast SEPM".

Send order to: R. P. Zingula  
 Exxon Co., USA  
 P.O. Box 4279  
 Houston, Tx. 77001